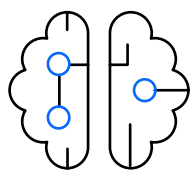


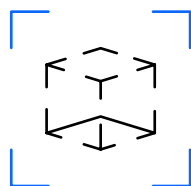
WE CREATE THE FUTURE OF MEDICINE

We are a technology company operating in the field of medicine. Our innovative solutions are revolutionizing the ways lives can be saved and patients can be treated. We develop technologies to support diagnostic imaging and next-generation digital medicine. We are continually expanding our service portfolio to match the needs of a changing world and new application areas.



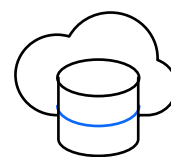
ARTIFICIAL INTELLIGENCE

Continuous improvement of the quality of diagnoses and development with modern IT tools.



3D IMAGING

Mixed reality (MR) and augmented reality (AR) technologies to improve diagnosis and treatment.



BIG DATA ANALYSIS

Analysis and handling of data aggregated using multiple peripherals in an innovative telemedicine system.

Microsoft
Partner

Mixed
Reality

Silver
Microsoft Partner

CarnaLife System and **CarnaLife** Holo are modules of the analytical telemedicine system CarnaLife, which is certified as a medical device supporting diagnostics, class IIb, by TÜV NORD Polska Sp. z o.o., a notified body authorized by the Polish Ministry of Health.

CarnaLifeSystem

Advanced tool for remote health monitoring.

CarnaLife System is an advanced telemedicine platform that allows the physician to assess and monitor the health of their patients and conduct consultations at any time of the day and at any location. The application provides unique opportunities to combine medical consultations with in-depth diagnostics supported by more than 20 types of devices. Examination results are analyzed 24/7 using AI and Big Data analytics.



Innovative solution for in-depth, remote patient diagnostics.

Unique combination of teleconsultation software with a range of remote diagnostic devices. The solution enables the delivery of long-term, in-depth, value-based healthcare.



Monitor patient's health remotely



Adjust treatment plan and react quickly to changes in patient's parameters



Work with many types of diagnostic equipment



Save time, easily analyze large data sets



Store data securely in the Microsoft Azure cloud



Connect securely with Microsoft Teams



CarnaLife System is a module of the CarnaLife telemedicine analysis system, certified as a Class IIb diagnostic support medical device.

Cooperation with Microsoft guarantees standardization of processes and security of data storage and transmission.



MICROSOFT TEAMS

Cooperation with Microsoft guarantees standardization of processes and security of data storage and transmission.



MICROSOFT AZURE

The Azure platform provides security, and offers built-in security tools and Intelligent Insights to help you quickly increase your security in the cloud.

CarnaLife System provides more than 20 types of tests using top-of-the-line remote devices.



Consultation and analysis

- ✓ Analysis of medical test results - immediately upon entering the data. The doctor can see which results have been analyzed
- ✓ Consultation in many forms - via video call, chat and phone call

Diagnostics and monitoring

- ✓ Peripherals for medical measurements, 24/7 monitoring
- ✓ 24/7 online analytics using AI and Big Data - alerts
- ✓ Integration with data collection systems or clinic without IT works



[Learn more](#)

CarnaLifeHolo

Mixed reality **used in modern healthcare.**

CarnaLife Holo is a breakthrough 3D imaging technology, supporting the precision, comfort and safety of medical procedures. With the software and Microsoft HoloLens 2 goggles, the doctor sees in real space a three-dimensional hologram of the patient's anatomy.



Efficient planning and
preparation for surgery



Reduction in treatment
time



Easier access to image
data

Microsoft
Partner

Mixed
Reality

Silver
Microsoft Partner



CarnaLife Holo a module of the CarnaLife telemedicine analysis system, certified as a Class IIb diagnostic support medical device.



Real-time visualization
directly from imaging
devices



Potential increase in
precision



Sterile, intuitive
interaction
with the hologram



Increased comfort for
the physician



Optimization of
physician's time and
faster diagnostics



More effective cooperation
and relationship with the
patient



Key benefits.



Preoperative diagnostics

- ✓ Accurate three-dimensional visualization of examinations performed before surgery
- ✓ Natural perception of anatomical structures
- ✓ Facilitated procedure planning and preparation for both physician and patient
- ✓ Measurement and visualization in holographic space

Intraoperative support

- ✓ Adjustable location of the hologram display
- ✓ Full sterility when interacting with holograms
- ✓ Access to tests as holograms throughout the operation
- ✓ Visualization of medical instruments in real-time with a GE Vivid E95 echocardiograph (for echocardiography)



[Learn more](#)

HoloComm

Mixed reality supports manufacturing, education and sales.



Holo Comm is the perfect solution for remote 3D product demonstration. The system is based on Microsoft HoloLens 2 glasses and displays data as holograms. It's a **scalable, customizable tool** that meets the Partner's individual needs. Data storage in the Microsoft Azure cloud **guarantees standardization of processes and full data security**.

HoloComm.

Key features:

- ✓ Support for any data type (PDF, video, surface model, images and more)
- ✓ Holographic 3D data visualization
- ✓ Interaction with the hologram using gestures, voice commands and virtual menus
- ✓ Share or stream the view from HoloLens 2 to any teleconferencing software

Additional features:

- ✓ Free interaction with the hologram and data placement
- ✓ Data filtering selection
- ✓ Personalize and plan the delivery and course of classes/meetings or presentations individually for each participant
- ✓ Remote user communication from anywhere in the world over the Internet

HoloComm Solutions.



Education

- ✓ Personalize and plan the course of instruction
- ✓ The solution supports student engagement and enhances learning
- ✓ Designed to train and educate physicians and students of medicine and related fields, such as medical physics, rehabilitation or biomedical engineering



Sales

- ✓ Visualize products, their application in practice and benefits for clients
- ✓ Reduce logistics costs associated with preparing for and participation in presentations or trade shows
- ✓ Standardization and improvement of the sales process, potentially reducing customer acquisition costs



Industry

- ✓ Remote audit and inspection from anywhere in the world to significantly reduce travel costs
- ✓ Remote service: a service technician can connect to the factory from anywhere in the world, display models, instructions or documentation
- ✓ Potentially reduce risk of miscalibrated production, save time and money



Automotive

- ✓ Visualize parts/components by transforming existing CAD and IoT data into 3D objects presented in the real world
- ✓ Demonstrate specific use in a particular vehicle, present features and benefits to clients
- ✓ Increase production process efficiency and employee satisfaction and reduce the cost of errors, waste and accidents



Construction Industry

- ✓ Visualize materials in 3D for a specific project, potentially reducing the risk of incorrectly calibrated production, reducing time and saving money
- ✓ Transform CAD and IoT data (for IoT integration with the system is necessary) into three-dimensional objects presented in the real world, with the potential to reduce the cost of errors, waste, and accidents

HoloComm - infinite possibilities:



Personalize and plan the course of educational classes



Conduct interactive tests, surveys, end-of-class summaries



Create a virtual trade fair stand and present your product offer



Standardize sales processes by delivering an interactive presentation of product application



Conduct remote audit or service from anywhere in the world with document sharing



Participate in collaboration/consultation in a three-dimensional space - explain constructional aspects effectively and quickly

[Learn more](#)



Contact us:

MedApp S.A. Aleja Pułkownika Władysława Beliny-Prażmowskiego 60 31-514 Cracow, Poland
biuro@medapp.pl +48 533 306 117 www.medapp.pl